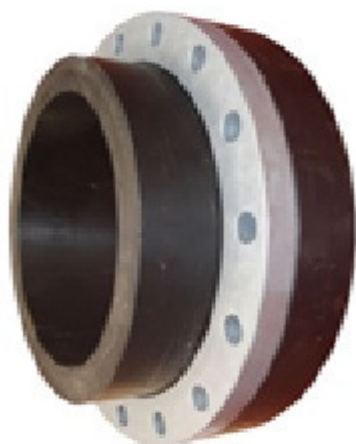


Stub Flange Drilled

Butt Weld
PE100 Black



PE Drilled Flange
(showing Galvanised Steel
backing ring ordered separately)

SDR Rating to be specified

Weld Spigot Size OD	Drilling Size	Flange thickness
90	65 (2.5")	15
110	80 (3")	17
125	100 (4")	18
140	100 (4")	18
160	125 (5")	25
200	150 (6")	30
250	200 (8")	40
250	225 (9")	40
280	225 (9")	40
315	250 (10")	40
355	300 (12")	45
400	350 (14")	50
400	375 (15")	50
450	375 (15")	60
450	400 (16")	60
500	450 (18")	60
560	500 (20")	60
630	550 (22")	60
710	600 (24")	60

Can be supplied extended for Electrofusion

Drilled Flanges

Produced for use in municipal pipeline systems or irrigation systems, PE drilled stub flanges provide a "size for size" connection of polyethylene pipe to other flanges with full face contact, eliminating the need to up size valves or DI fittings as well as provide full bore capability of any pipeline.

Made from PE100 material, they are available in SDR17 and SDR11. Backing rings are available in Galvanised Steel, Stainless Steel or G10 Resin

Drilling patterns available include-

AS4087
Table D & E
ANSI #150
DIN 10 & 16
and China HB & HW